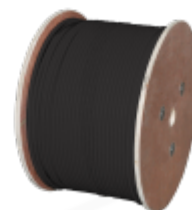


S/FTP cat.7 4x2x23AWG 500m 1000 MHz (10Gb/s), ALANTEC Copper cable, PE OUTDOOR

Part no.: KIS7OUTS500
Manufacture: ALANTEC
EAN code: 5901738556560

Version: 20241204
Lang.: EN



Description

Each cable consists of 8 colour coded polyethelene insulated conductors. These are twisted together to form 4 pairs with varying lay lengths. The printing detail on the sheath, includes the cables part number, specification details and a unique 500 metre marking on each spool supplied, allowing for quick and easy measurement of cable installed and the amount remaining on the spool.

Technical Specifications

CONSTRUCTION AND ELECTRICAL

Category	7
Class	F (1000MHz)
AWG	4x2x23AWG
Conductor	100% Cu - bare copper wire AWG 23/1 (0,57 mm)
Insulation	polyethylene
Fire Euroclass	Fca
Twisted element	4x2x23AWG, 4 pairs stranded, each pair covered with polyester tape, whole shielded by braid of copper wires
Overall shielding	Pairs shielded with polyester tape and covered by aluminium, earthing wire made of tinned copper (diam. 0.4mm) additionally shielded by braid of copper wires
Jacket	polyethylene PE resistant to UV radiation
PoE	802.3 at
Color	black

ELECTRICAL PROPERTIES at 20°C

Conductor DC Resistance	$\leq 95 \Omega / \text{km}$
Changing resistance	$\leq 2\%$
Insulation resistance (500V)	$\geq 5000 \text{ M}\Omega \cdot \text{km}$
Mutual Capacitance at 800 Hz	nom. 48 nF/km
Changing capacitance passive resistance	$\leq 1500 \text{ pF/km}$
Characteristic impedance (1-100MHz)	$(100 \pm 15) \Omega$
Nominal Velocity of Propagation (NVP)	74%

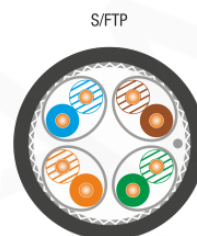
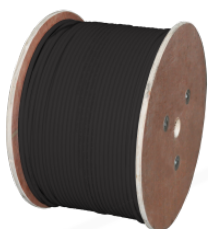
ELECTRICAL PROPERTIES at 20°C

Delay spread	Nominal ≤ 535 ns/100m
Angle spread	Nominal ≤ 20 ns/100m
Tester installation DC, 1 min.	1000 V

MECHANICAL PROPERTIES

Bend Radius	4 x \varnothing overall diameter
Max. pulling force	80 N
Temperature range - work	-40°C up to + 60°C
Temperature range - instalation	-15°C up to + 50°C
Outer diameter	7,9 mm
Weight / km	56kg
Packing	spool (500m)

Gallery / Certificates



Standards

- PN-EN 50173
- ISO/IEC 11801

Rozszerzona karta produktu



Zaskanuj QRCode aby otworzyć /
pobrać rozszerzoną kartę produktu.